

Patagonia

tierra magica



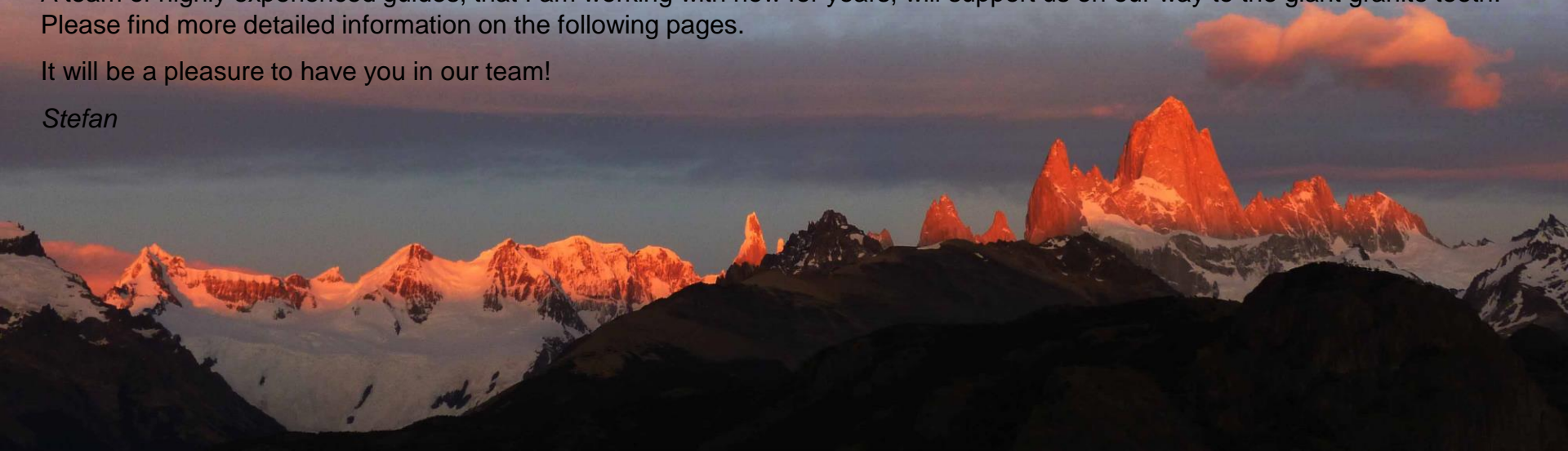
Over the last three decades I've spent a full year exploring the magical mountains of Patagonia. I deeply understand why it's known as the land of storm and tempest, but I also know that the weather is much better than the rumors of unsuccessful climbers and that it's one of the most beautiful mountain ranges in the world. Meanwhile I have made four first ascents of unclimbed peaks and several first ascents of bigwalls in the area.

The trip I am planning to do with you, will take us into the most remote areas that are normally reached by extreme climbers only – we are going to visit the **Heart of Patagonia**. A route far from the tourist groups visiting Perito Moreno and taking in the long distance views of Cerro Torre and Fitz Roy. On our expedition we will trek deep into the beautiful national park of Los Glaciares, be among the few people to get up close & personal with the iconic Cerro Torre and Fitz Roy massif. In 2016 and 2018 we already did an equivalent trip with a lot of success into this beautiful area of cristalclear rivers, deepblue ice, pristine white snow, red berries, etc. and will be accompanied by strong winds, warming sun, freezing cold, ...

This expedition is a challenging undertaking, it's not a tourist trail. You need a little bit of climbing-experience in rock & ice, prior bivouac-experience and the ability to carry your backpack of 12 -18 kg up to 8 hours a day. The combination of huge granite towers, the awesome scenery of glaciers, the clear creeks and green jungle of Antarctic beech-trees are unforgettable. A team of highly experienced guides, that I am working with now for years, will support us on our way to the giant granite teeth. Please find more detailed information on the following pages.

It will be a pleasure to have you in our team!

Stefan



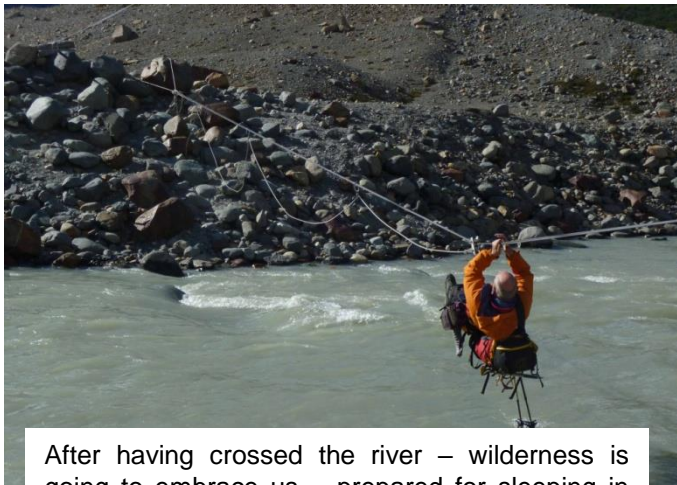
Patagonia

tierra magica



As the weather in Patagonia is a little bit unpredictable and quickly changing I do not want to give you a clear-cut programme for the seven days we shall be together. I shall outline different areas where it would be worth going to. Depending on the weather and your actual wishes & capabilities we shall decide where to go & what to climb. What I can guarantee is, that we are going to use the

highest safety standards possible, that we shall climb at least **one summit** and that this trip will be **outstanding** and not comparable to previous trips that you might have experienced.



After having crossed the river – wilderness is going to embrace us – prepared for sleeping in bivouacs gives us **maximum flexibility**, however a light-weight tent will protect us from rain / snow.



Our trip will reward you with beautiful glacier-views, sunrises & rock-towers covered with rime-ice like whipped cream.

Patagonia

tierra magica



When I came to Patagonia in 1990 for the first time the country was wild. Chalten was a forgotten village of a handful crazy gauchos mixed with some climbing-bums who lived here for months in self-mad huts made of fallen branches, tree trunks and nylon-sheets beneath the walls. No paths were marked and you had to use your instincts to reach your goals.

Meanwhile Chalten has changed a lot. Shops, hotels and hairdressers have been established and meanwhile more than 3.500 people earn their living during the season from the hundreds of tourists coming to see the granite giants every year. However the tourists are stopped after 3 hours by rivers, glaciers or rockfaces. If you know the secret trespasses you can enter into the Patagonian Kingdom. On our trip I am going to take you to the wild side of Patagonia – to the area where only extreme climbers rarely come to.

The only thing that did not change is the forest underneath the granite teeth with its leaves turning orange in autumn and the berries along the paths.



Patagonia

tierra magica



In former times you had to carry backpacks around 40 kilos to get all your kit to the mountain. Nowadays equipment became much lighter (thanks to companies like www.ultralightoutdoorgear.co.uk that we can highly recommend!) and you should be trained to carry around 12-18 kilos for our trip as you will not have to carry any camalots, ropes, chocks or pitons.

Our guides-team will be adapted to the size of the group. **1 guide for 1-2 delegates.** The challenge for our trip will be to combine the abilities of each group member with the possibilities the weather will give us and make the best out of this combination. Even if the weather is bad, there are great peaks to climb if you know where, how and when. 😊



On my way towards Cerro Torre



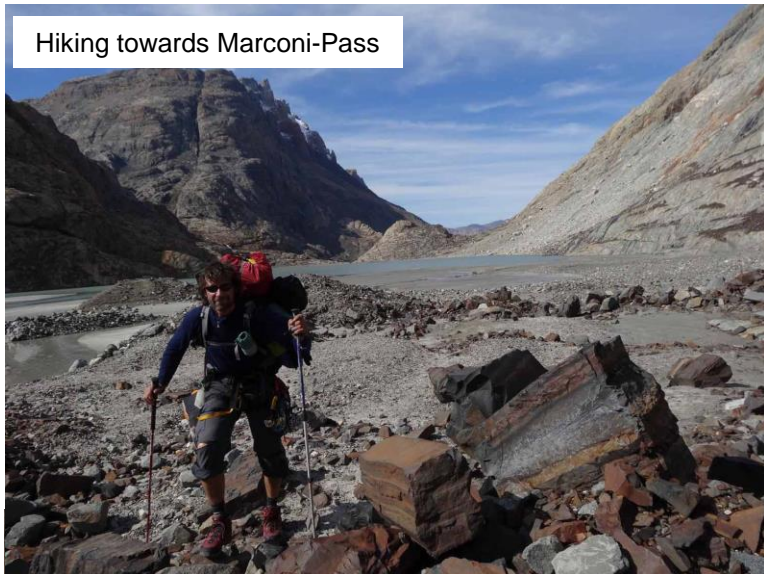
Patagonia

tierra magica



Here are more photographs of this wonderful area:

Hiking towards Marconi-Pass



Last sun-rays on Mt. Fitz Roy



Pizarra Escondida & magical Patagonian icecap

Hiking on the Cerro Pierre Giorgio-glacier



Panorama from the Marconi-range





Little waterfall near the wood-camp



Slotcanyon of ice



Colourful moraines



Flours at 1.500m



Cerro Torre in winter-clothes



Dinner at the woodcamp



At Paso Quadrado



Facts & figures

TIME: For having an unforgettable time in Patagonia, to explore the area and to climb at least one summit, we need seven full days. Depending on the weather & the abilities of the delegates we shall define where & when to go when we meet in El Chalten. We heavily recommend that you extend your stay before or after our trip and are happy to support you with a lot of ideas & spots worth seeing.

Start in **El Chalten**: Tuesday **28th of January 2025** (in the evening) – latest departure is Friday **7th of February 2025** in the evening in El Chalten again . If you need help with your flight, with transfers from / to Calafate don't hesitate to contact me. My uncle runs a travel-agency and we are able to organize everything that you need. As there is a limited amount of delegates we can take and a lot of people who want to join the trip I need your **confirmation as soon as possible** to be able to confirm your participation. If the date does not fit - I am sure that there will be another trip in 2022 – similar time.

LOCATION: We shall meet in El Chalten at the Cervceria “Don Guerra”. Please book a hostel / hotel for this first night to be able to prepare / leave the remains of your luggage to leave behind while we are staying outdoors. For the next days it is likely we shall often sleep outdoors tent / bivouac. For the last night we recommend a hotel or hostel as your neighbour on the flight home will appreciate you having had a shower after our trip.

ABILITIES - PREPARATION: This trip is meant for people that are **above average fitness**. (This means being able to run 10km in 50min or less, hiking 1000 altimeters in 120min or less, or being able to keep a speed of 5km/h with 20° on the treadmill for 120min, or to make 2,2 (or more) Watt / kg on a bike-trainer a 120min → **fitness benchmarks**) For the preparation it is important that you are doing cardio-pulmonary training like 1-2 hours running or quick hiking (pulse 120-145) twice or three times a week (at least for 6-8 months) to get in shape in a physical way. For the technical difficulties you have to have experience in walking on crampons, some rock- and some iceclimbing help. If you have doubts about your abilities we can provide a course beforehand. You will get more advice for training & needed gear after sending your registration. If your abilities in talking in English are not as good as you want them to be, this can be a good opportunity to improve your English. As a guides-team we can communicate in **languages** such as German, English, French, Italian & Spanish.

YOUR INVESTMENT FOR OUR PERFORMANCE:

3.500,-- Euros per person for the organisation and delivery of 6-7 days guiding in the alpine area of Patagonia. The reasons for this price are: a small size of group, a large group of guides that are the best of the guild and high travelcosts for the guides). As the trip can be very demanding and to have enough safety-margin, the guides-team will consist of 3-4 professionalists that I am working with for years. I (Stefan Gatt) am the leader of the gang.

Limited group-size: The maximum amount of participants is **6 (six) people**.

Included: Guiding as described above and all personal mountain & safety-equipment for the guides. A collection of **digital photographs** of our adventurous journey as an unforgettable memory that I will send you in the days after the programme via WeTransfer.

Not included: Personal travel expenses, lodging, food & beverages and rental mountain-equipment

Conditions of payment: With the payment of **2.000,-- Euros** your place in the “Expedition-team” is confirmed. The remaining 1.500,-- Euros are to be paid on the first day of guiding. If you cancel (for whatever reason) until end of September 2024 you get a full refund. If you cancel later than end of September we have to keep the 2.000,-- Euros as a cancellation fee. If you cancel later than 31st of December 2024 80% of the full amount is due.



Your lead-guide for your adventures:



Mag. Dr. Stefan Gatt

Born on the 8th of July 1970 I started extreme climbing at the age of thirteen. Six years later I led my first expedition at the age of nineteen to Bolivia with 19 participants. Since 1993 I am holding the certificate as a UIAGM - Mountain-guide. Meanwhile I led more than 15 expeditions to the highest peaks in South-America and Tibet with extraordinary success. The last was on Mt. Everest where six climbers out of ten reached the summit. Two climbers succeeded without oxygen. My biggest personal successes in the mountains: 1st snowboard-descent from Mount Everest on the 22nd of May 2001 (without oxygen), 2nd snowboard-descent from Cho Oyu 8.201m in 1999, 1st rescue of an injured person in a lying position from 7.500m on Cho Oyu and 1st snowboard-descent from Chimborazo 6.345m (the highest mountain of the world measured from the middle of the earth) in 1990. Furthermore I made about 30 first ascents on the highest and most difficult mountains of the world. All climbs were made in pure alpine style. This means climbing the mountain in one push without the use of bottled oxygen, sherpas or fixed ropes.

In my normal life I work as a coach and facilitator in the field of management-training since 1992. After finishing my studies of sports-science in Vienna in 1996 I put my full power and commitment into this passion. Meanwhile our team of consultants and facilitators grew to a size around 10 people in the inner circle and 30 in an outer circle. We are developing individuals, teams and organisations. You can find more information on www.gatt-ce.at.

My first trip to Patagonie in 1990 was extraordinary for me. Together with my father I was lucky enough to climb Aguja Guillaumet in a 25 hours push. After a restday we made one of the early ascents of Mount Fitz Roy. In 1991 we climbed Ag. Mermoz via the Westface. After more successful climbs in 1992 we realized the first ascent of the Westface of Guillaumet "Padrijo" the year after. In 1998, 2010, 2014 and 2016 more first ascents were added.

From my very first visit I was fascinated by this beautiful landscape, the wilderness & the gigantic rockfaces . . .

*I am looking forward to welcome YOU in our Patagonia-team in **February 2020!***

Stefan

Mag. Dr. Stefan Gatt

e-mail: office@gatt-ce.at

snail-mail: A-4040 Linz-Puchenu, Forstnerstr. 5

mobile: (+43) 664-210 50 95

homepage: www.gatt-ce.at



First name: _____ Surname: _____ Date of birth: _____ e-mail: _____

Postcode: _____ City: _____ Street: _____ Mobile: _____

- I agree to join the trip to Patagonia from **28th of January - 7th of February 2025** and that my signature is a binding agreement
- I am already an experienced climber _____

_____ (please sign to the left and briefly describe your experience)

- I certify that I reach the fitness-benchmarks I will train as much, that I reach these benchmarks at the time that the adventure starts!
- I want to attend a training in alpine skills before the programme
- I want to stay in the area before or after our trip and need more information what you can recommend me

When we receive your written form and the advance payment of **EUR 2.000,-** you are in the team. Please remit the money with the text **“Patagonia 2025”** to my Austrian bank account: Erste Österreichische Sparkasse: SWIFT-code: GIBAATWW or IBAN: AT252011100037634356. After your registration you will receive more information about “Training”, “equipment-checklist”, “frequently asked questions” and a “handout for alpine climbs”.

Terms of business (complying to the written information):

Included: Organisation and delivery of a maximum of 7 days guiding in the alpine area of Patagonia. Travel expenses & all personal mountain & safety-equipment for the guides. A collection of digital pictures of our expedition as an unforgettable memory.

Not included: Personal travel expenses, food & beverages, lodging in hotels or hostals, rental mountain-equipment.

Conditions of payment: With the payment of **2.000,- Euros** your place in the “Expedition-team” is confirmed. The remaining 1.500,- Euros are to be paid on the first day of guiding. If you cancel (for whatever reason) until end of September 2024 you get a full refund. If you cancel later than end of September we have to keep the 2.000,- Euros as a cancellation fee. If you cancel later than 31st of December 2024 80% of the full amount is due.

With my signature I confirm my decisions written above.

(location, date)

(Signature)